

<div>STRUCTURAL NOTES</div> <div>1. SEE SHEET S01.01 FOR STRUCTURAL NOTES.</div> <div>2. DESIGN LEDGE INCIDENTAL LIVE LOAD = 40 PSF</div> <div>3. CONNECT FRT PLYWOOD DECKING TO SUPPORTS W/#8 SCREWS @ 8' C/C AROUND PERIMETER OF DECK, AT PANEL EDGES AND AT INTERIOR SUPPORTS.</div> <div>IF 3/4" FRT PLYWOOD IS NOT ALLOWED BY MALL OR BUILDING OFFICIAL, THEN REPLACE PLYWOOD WITH 3/4" VERSAROC STRUCTURAL CEMENT BONDED PARTIAL BOARD BY U.S. ARCHITECTURAL PRODUCTS, INC., OR EQUAL.</div>			<div><div>NOTE: PROVIDE STANDARD 24" SQ ACCESS PANEL IN WALL IF WATER HEATER IS LOCATED BEHIND WALL</div><div><div>20 GA CONT TRACK</div><div>3 5/8" DP, 20 GA STUD BRACE @ 48" c/c</div><div>3 5/8" DP, 20 GA STUD @ 16" c/c</div><div>DO NOT ATTACH SHELVING TO THIS WALL</div><div>6" DP BLOCKING @ 24" c/c MAX. AT EACH END, CLIP FLANGES, BEND WEB AND CONNECT TO JOIST W/(2) SCREWS</div><div>3/4" FRT PLYWOOD</div><div>MTL WALL STUDS, SEE PLAN FOR SIZE & SPACING</div><div>(1) SCREW AT 16" c/c</div><div>PROVIDE BRIDGING PER R/S03.1, TYP.</div><div>CLIP FLANGE, BEND WEB AND ATTACH DIAGONAL TO SHEATHING w/(3)-#8 WOOD SCREWS</div><div>MTL JOISTS, SEE PLAN FOR SIZE & SPACING</div><div>SEE ARCH DWGS FOR CEILING ELEV</div><div>8'-0" (MAX) HIGH MALL (OR TO BOTTOM OF EXIST DECK)</div><div>4'-0"</div><div>CONT. 3 5/8" DP, 20 GA STUD</div><div>SEE ARCH DWGS</div></div></div>																				
<div>STRUCTURAL AND CODED NOTES</div>			<div>N.T.S.</div> <div>001-S041-S00-NOTE</div>		<div>S</div> <div>08.15.11</div>	<div>LEDGE SECTION</div>			<div>1 1/2" ± 1'-0"</div> <div>008-S041-M00-SECT</div>		<div>M</div> <div>08.15.11</div>	<div>NOT USED</div>			<div>--</div> <div>--</div>		<div>H</div> <div>--</div>	<div>LEDGE SECTION</div>			<div>1 1/2" ± 1'-0"</div> <div>008-S041-D00-SECT</div>		<div>D</div> <div>08.15.11</div>
<div><div><div>SECTION OF 3 5/8", 20 GA TRACK FOR ATTACHMENT OF HEADER TO FULL HEIGHT STUD</div><div>SCREW (TYP)</div><div>3/4" FRT PLYWOOD</div><div>6" DP BLOCKING @ 24" c/c MAX. AT EACH END, CLIP FLANGES, BEND WEB AND CONNECT TO JOIST W/(2) SCREWS</div><div>EDGE JOIST</div><div>CONT WALL TRACK</div><div>SCREWS @ 12" c/c</div><div>(1) SCREW AT BLOCKING</div><div>HOLD LINTEL BOTTOM TRACK SHORT OF "CONNECTOR" TRACK</div><div>INSTALL PIECE OF TRACK AT TOP OF STUD AND CONNECT TRACK TO STUD AND LINTEL</div><div>DBL STUD @ EDGE OF EACH OPNG</div><div>OPENING</div><div>R1 VIEW 1 1/2" ± 1'-0"</div><div>R2 VIEW 1 1/2" ± 1'-0"</div><div>R1 S04.01</div><div>R2 S04.01</div></div></div>			<div>1 1/2" ± 1'-0"</div> <div>008-S041-R00-SECT</div>		<div>R</div> <div>08.15.11</div>	<div>NOT USED</div>			<div>--</div> <div>--</div>		<div>L</div> <div>--</div>	<div>NOT USED</div>			<div>--</div> <div>--</div>		<div>G</div> <div>--</div>	<div>NOT USED</div>			<div>--</div> <div>--</div>		<div>C</div> <div>--</div>

Limited**brands**

LIMITED STORE PLANNING, INC.
d/b/a STORE DESIGN & CONSTRUCTION
Three Limited Parkway • Columbus, Ohio 43230
Telephone: 614.415.7000 • Fax: 614.415.7349

THESE DRAWINGS AND SPECIFICATIONS ARE THE PROPERTY OF LIMITED STORE PLANNING, INC. (LSP) AND SHALL NOT BE REPRODUCED OR USED IN ANY MANNER WITHOUT THE WRITTEN PERMISSION OF LSP. ANY UNAUTHORIZED REPRODUCTION OR USE OF THESE DRAWINGS OR SPECIFICATIONS SHALL BE AT THE USER'S SOLE RISK AND WITHOUT LIABILITY TO LSP. THESE DRAWINGS AND SPECIFICATIONS ARE NOT TO BE USED FOR ANY OTHER PROJECTS WITHOUT THE WRITTEN PERMISSION OF LSP. THESE DRAWINGS AND SPECIFICATIONS ARE NOT TO BE USED FOR ANY OTHER PROJECTS WITHOUT THE WRITTEN PERMISSION OF LSP. THESE DRAWINGS AND SPECIFICATIONS ARE NOT TO BE USED FOR ANY OTHER PROJECTS WITHOUT THE WRITTEN PERMISSION OF LSP.

PROJECT INFORMATION:

010501726

PINK VICTORIA'S SECRET

FAYETTE MALL

5401 NICHOLASVILLE RD

SPACE # 1-904

LEXINGTON, KY 40503

REVISIONS:

REVISION

DATE

DESIGNED BY:

ELITE CONSTRUCTION GROUP

LAKE JACKSON, TX

PHONE: 979-245-0712

DRAWN BY:

SLH

RA

CHECKED BY:

GDK

DATE ISSUED:

09-05-2014

LEDGE FRAMING PLAN & DETAILS

DRAWING NUMBER:

S04.01

SCOPE:

DESIGN TYPE:

PROJECT #:

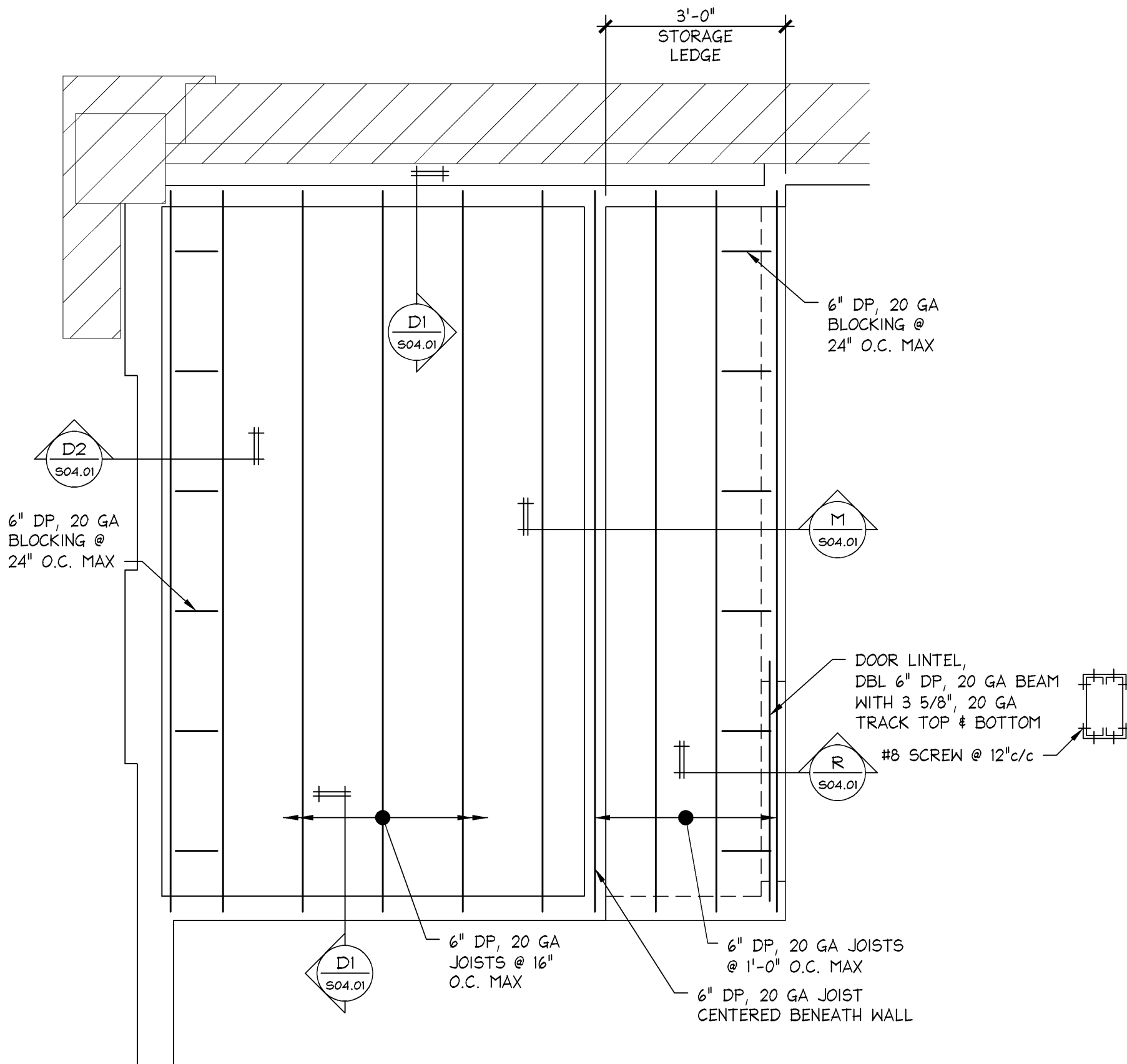
PACKAGE:

GENERATION:

PROJECT #:

NOTE: THESE PRINTS HAVE BEEN REDUCED BY 50 PERCENT SCALE. WILL BE 50 PERCENT OF WHAT NOTED ON PLANS

NOTE:
LEDGE HAS NO PERMANENT ACCESS STAIR OR LADDER, AND IS INTENDED FOR INCIDENTAL LOADING OF 40 PSF MAX



ALL WALLS SHALL BE 3 5/8" DP, 20 GA MTL STUDS @ 16" O.C., UNLESS NOTED.

ALL CONNECTIONS SHALL BE MADE USING #8 SCREWS WHERE INDICATED IN DETAILS, UNLESS NOTED.